

LOCSD Water Quality Results from 05/16/2024 Sampling Event

Well			MW-1		MW-2		MW-3		MW-4		MW-5	
Analyte	Unit	Maximum Contaminant Level	Shallow	Deep	Shallow	Deep	Shallow	Deep	Shallow	Deep	Shallow	Deep
Boron, Total Recoverable	mg/L	—	0.085	0.065	0.133	0.139	0.145	0.140	0.228	0.225	0.141	0.139
Chloride	mg/L	500*	110	110	110	150	49	48	97	100	43	43
Nitrate as N	mg/L	10	2.1	2.2	8.6	9.9	5.9	6.1	14	14	4.7	4.7
Nitrite as N	mg/L	1	ND	ND	ND	ND	ND	ND	ND	ND	ND	ND
Nitrogen, Total	mg/L	—	na	2.20	8.89	10.10	5.90	6.10	14.00	14.00	4.70	4.70
Nitrogen Kjeldahl, Total	mg/L	—	ND	ND	0.287	0.215	ND	ND	ND	ND	ND	ND
Sodium, Total Recoverable	mg/L	—	63.8	58.1	65.3	72.6	43.4	43.2	71.3	71.8	40.0	40.5
Sulfate	mg/L	500*	48	42	96	94	190	190	180	180	170	170
Total Dissolved Solids	mg/L	1000*	529	510	948	1030	853	844	1160	1160	745	746
δ15N of nitrate (relative to Air)	‰ (per thousand)	—	na	16.8	na	20.0	na	8.8	na	11.7	na	9.3
δ18O of nitrate (relative to VSMOW)	‰ (per thousand)	—	na	13.3	na	15.9	na	6.6	na	3.8	na	7.8

* = Secondary Maximum Contaminant Level

na = not sampled

VSMOW = Vienna Standard Mean Ocean Water

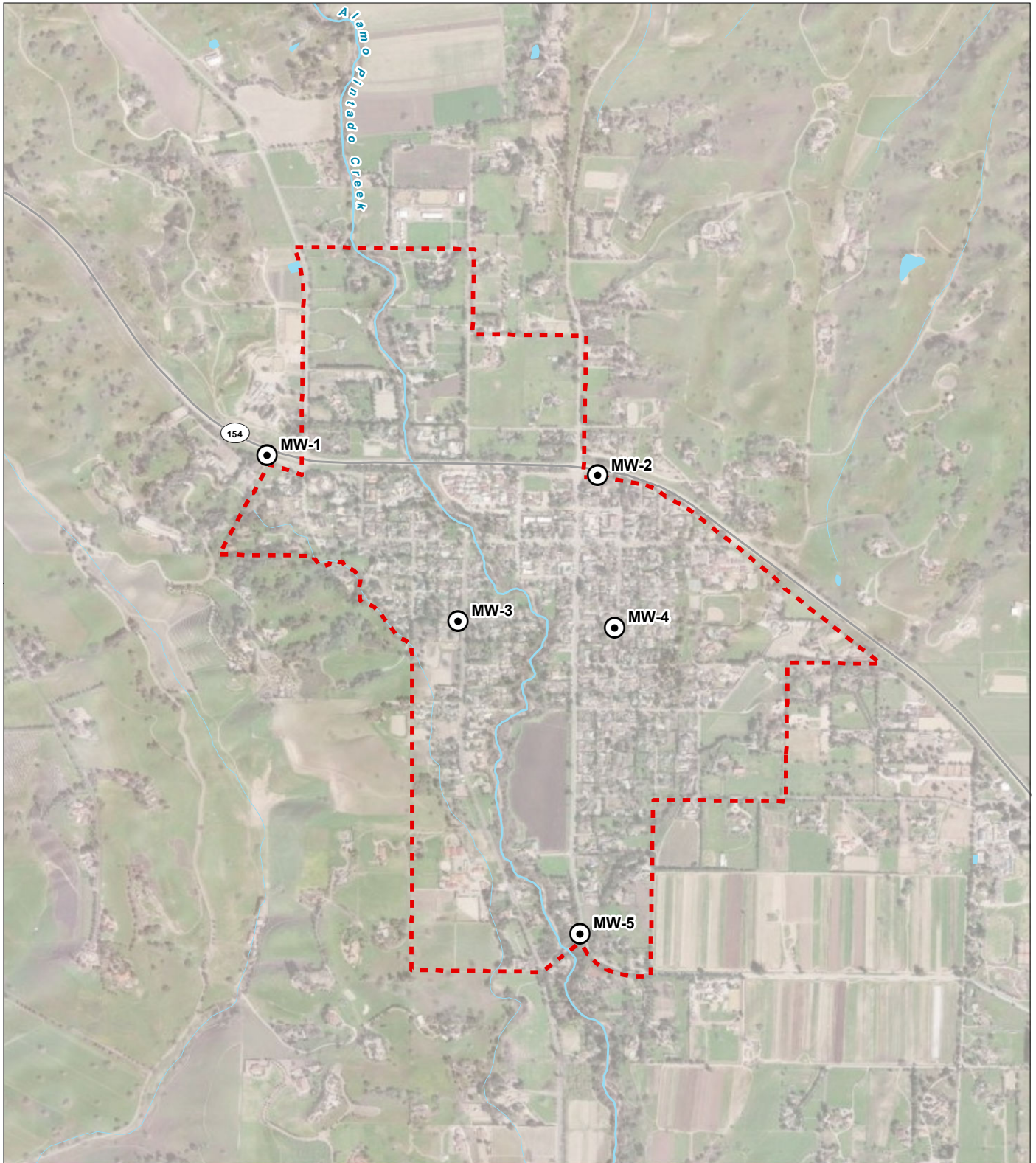
LOCSD Water Quality Results from November 2022 through May 2024

			MW-1				MW-2				MW-3			MW-4			MW-5		
Date			November 2022	February 2024	May 2024 (shallow)	May 2024 (deep)	November 2022	February 2024	May 2024 (shallow)	May 2024 (deep)	February 2024	May 2024 (shallow)	May 2024 (deep)	February 2024	May 2024 (shallow)	May 2024 (deep)	February 2024	May 2024 (shallow)	May 2024 (deep)
Analyte	Unit	MCL																	
Aluminum	mg/L	1	11	0.25	—	—	1.1	7.46	—	—	1.19	—	—	0.37	—	—	2.56	—	—
Arsenic	mg/L	0.01	0.011	0.013	—	—	0.004	0.013	—	—	ND	—	—	ND	—	—	ND	—	—
Boron	mg/L	—	0.078	0.083	0.085	0.065	0.290	0.180	0.133	0.139	0.140	0.145	0.140	0.210	0.228	0.225	0.140	0.141	0.139
Chloride	mg/L	500*	110	110	110	110	130	210	110	150	53	49	48	87	97	100	41	43	43
Iron	mg/L	0.3*	22.00	0.41	—	—	2.00	12.1	—	—	1.88	—	—	0.39	—	—	3.60	—	—
Manganese	mg/L	0.05*	0.37	0.04	—	—	0.11	0.32	—	—	0.10	—	—	0.01	—	—	0.06	—	—
Nitrate as N	mg/L	10	2.6	2.4	2.1	2.2	10	11	8.6	9.9	6.3	5.9	6.1	11	14	14	4.5	4.7	4.7
Nitrite as N	mg/L	1	—	—	ND	ND	—	—	ND	ND	—	ND	ND	—	ND	ND	—	ND	ND
Nitrogen, Total	mg/L	—	—	—	—	2.20	—	—	8.89	10.10	—	5.90	6.10	—	14.00	14.00	—	4.70	4.70
Nitrogen Kjeldahl, Total	mg/L	—	—	—	ND	ND	—	—	0.287	0.215	—	ND	ND	—	ND	ND	—	ND	ND
Sodium	mg/L	—	—	—	63.8	58.1	—	—	65.3	72.6	—	43.4	43.2	—	71.3	71.8	—	40.0	40.5
Sulfate	mg/L	250*	40	39	48	42	120	95	96	94	190	190	190	180	180	180	190	170	170
Total Dissolved Solids	mg/L	500*	450	492	529	510	840	1120	948	1030	846	853	844	1090	1160	1160	791	745	746
δ15N of nitrate	‰	—	—	—	—	16.8	—	—	—	20.0	—	—	8.8	—	—	11.7	—	—	9.3
δ18O of nitrate	‰	—	—	—	—	13.3	—	—	—	15.9	—	—	6.6	—	—	3.8	—	—	7.8

* = Secondary Maximum Contaminant Level

— = not applied/not sampled

ND = not detected



LEGEND



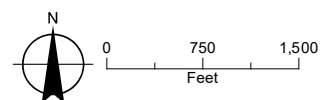
-  Monitoring Well
-  Los Olivos Special Problem Area
- All Other Features**
-  Major Road
-  Watercourse
-  Waterbody

FIGURE 1

Well Location Map
MW-3, MW-4, and MW-5 Well Construction Report



Date: March 12, 2024
Data Sources: BLM, ESRI, ODOT, USGS, Aerial Photo 2020

